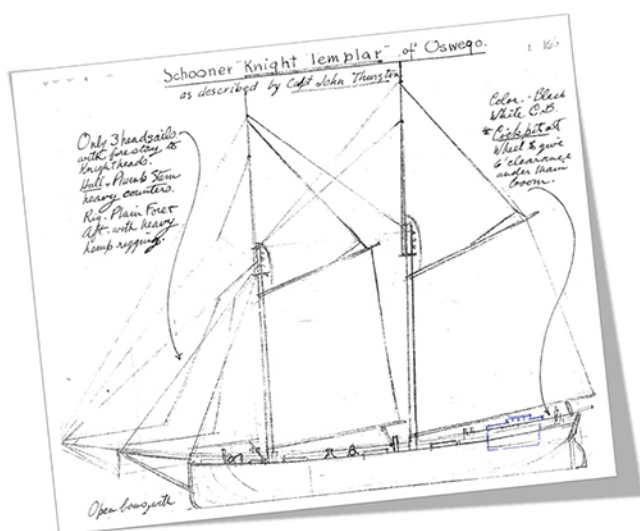


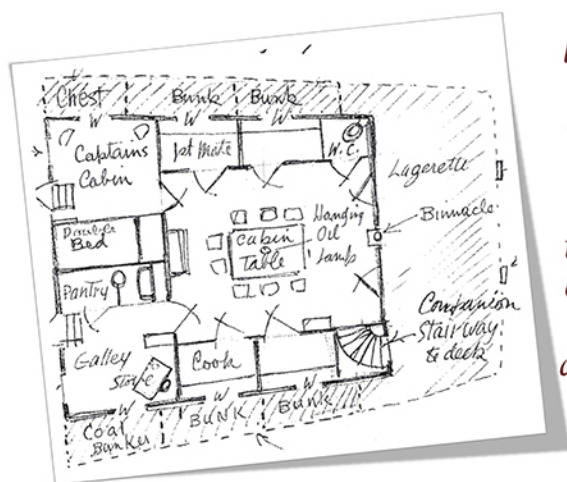
Cabins of the Great Lakes

19th Century Great Lakes commercial sailing vessels, particularly those of American make, had varying accommodations depending on the type and use of each distinct vessel. Trade vessels on the lower lakes, Ontario and Erie, tended to consist mainly of the "canaller" type - or those that were built with the specifications to pass through the Welland and Erie Canals. Given their size constraints, they were less elaborate than the grain and ore carriers of the upper lakes - Michigan, Huron and Superior.

Many of the Ontario and Erie vessel cabins had a floor flush with the main deck so as to provide ample space for cargo below deck. Seen here is the location of the cabin on *Knight Templar* - an Oswego schooner built by George Goble. Notice the aft cabin above deck highlighted in blue.



The grain and ore carriers of the upper lakes were too large for inter-lake trade and were often admired by the sailors of the lower lakes. The cabins of these vessels were often considered stately with paneling, fine wood and brass work, carpets and the finest of furnishings.



Seen above is the more spacious and elaborate accommodations for the upper lakes cargo schooner *Grampian* - Built in 1894 by James Davidson of West Bay City, MI.

Information Courtesy of:

Loudon G. Wilson Collection at the Historical Collections of the Great Lakes, Jerome Library, Bowling Green State University.